

# GENEX

THE ULTIMATE SOFTWARE FOR REAL-TIME PCR GENE EXPRESSION ANALYSIS

## Overview

Optimal use of real-time PCR measurements requires proper analysis of real-time PCR data. GenEx provides the appropriate tools to analyze real-time PCR gene expression data and to extract valuable information from the measurements. Behind a user friendly interface GenEx offers:

- User friendly data pre-processing
- Mean centering
- Autoscaling
- Powerful graphics
- Scatter plots
- Pearson and Spearman correlations
- Box and whiskers plots
- GeNorm.
- Normfinder
- Principal Component Analysis
- Hierarchical Clustering.
- Self-Organizing Maps
- Potential curves
- Trilinear decomposition

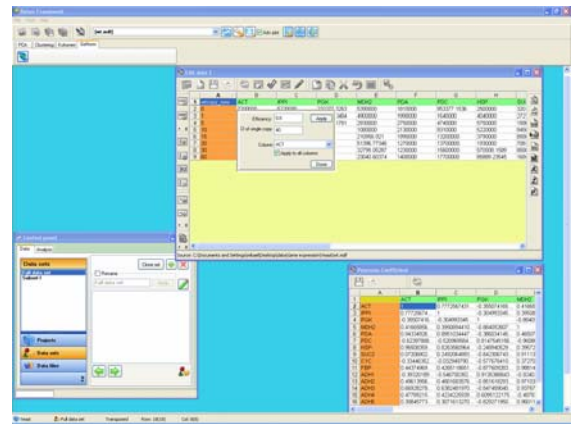
GenEx is particularly useful to:

- Identify the most suitable house-keeping genes for normalization.
- Classify samples as negative and positive for disease.
- Classify test samples based on validated training samples.
- Identify genes that are part of the same expression pathway
- Identify genes that respond similarly to stimuli
- Sub-classify samples according to type of disease.

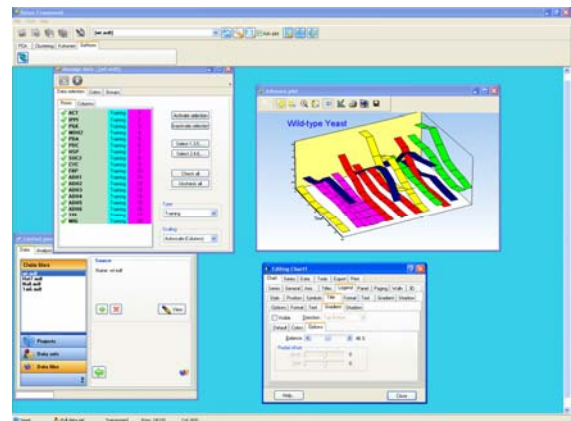
## Features

GenEx is fully compatible with Microsoft Excel and normal text editors. Examples of features are:

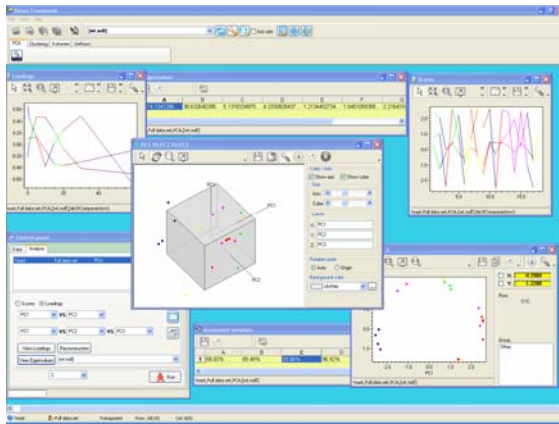
### DATA EDITOR



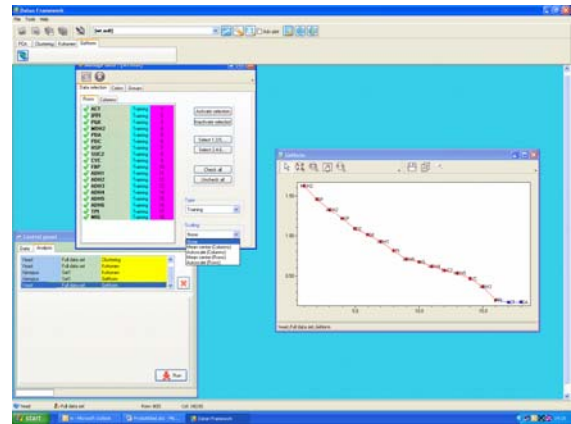
### ADVANCED PLOTTING



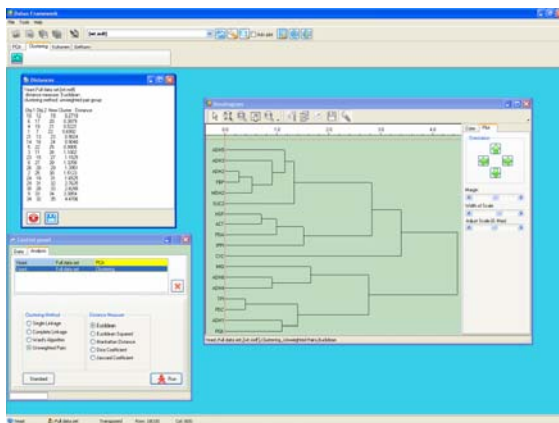
## PRINCIPAL COMPONENT ANALYSIS



## GENORM



## HIERARCHICAL CLUSTERING



## What makes GENEX different?

GenEx is the only software fully dedicated to real-time PCR that offers the whole collection of advanced and most powerful methods for data analysis. It's extremely user-friendly interface makes these methods readily accessible for the non-specialist.

## System requirements

Intel® Pentium® II 400 Mhz or better

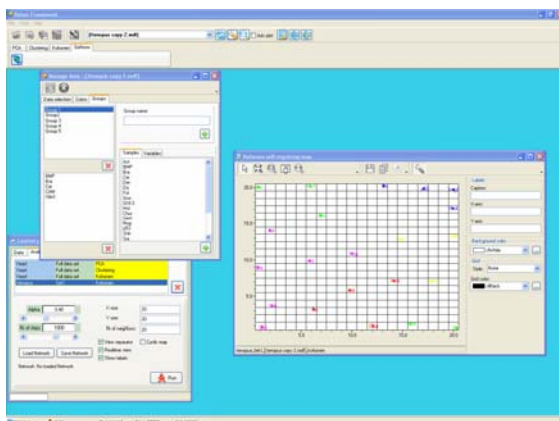
Microsoft® Windows® 98 or later

64 MB of RAM (128 MB or more recommended).

15 MB of available hard-disk space

Resolution 1024 by 768 pixels or higher

## NEURAL NETWORK



## Contact information

[genex@multid.se](mailto:genex@multid.se) & [www.multid.se](http://www.multid.se)